

MWP

RECEIVED: 19/12/2025

**Appendix 7B – Collision Risk
Modelling Report**

Ballynisky Wind Farm

Ballynisky Green Energy Ltd.

December 2025

RECEIVED: 19/12/2025

Figures

Figure 1 – Site location;

Figure 2 – Designated sites;

Figure 3 – VP locations;

Figure 4a – Flight observations from VP surveys for target species in Year 1;

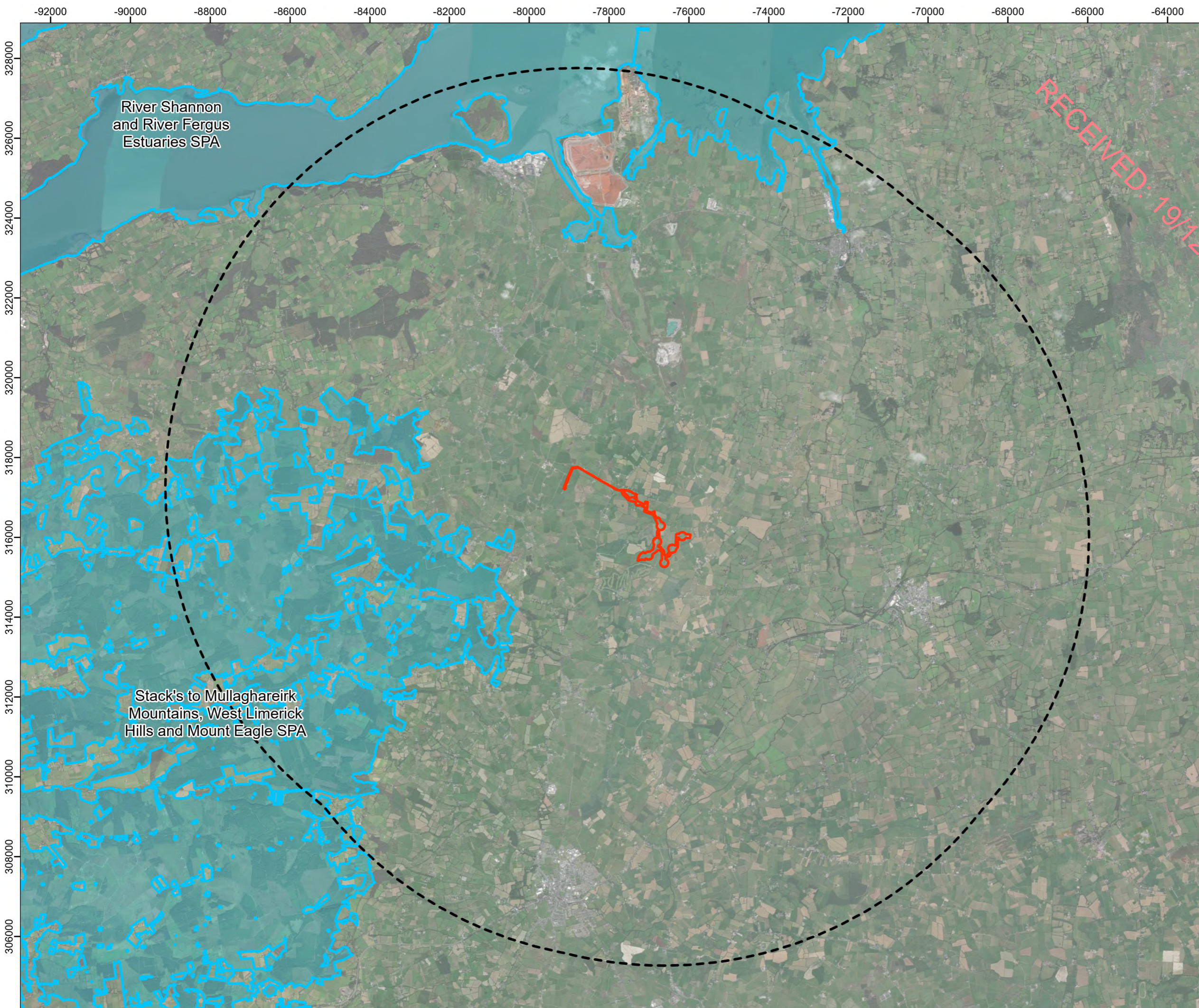
Figure 4b – Flight observations from VP surveys for target species in Year 2;

Figure 4c – Flight observations from VP surveys for target species in Year 3;

Figure 4d – Flight observations from VP surveys for target species in Year 4;

Figure 4e – Flight observations from VP surveys for target species in Year 5; and

Figure 4f – Migration passages for black-headed gull in all survey years



- Legend:**
- Site Boundary
 - 10km Site Buffer
 - Special Protection Area

RECEIVED: 19/12/2025

River Shannon
and River Fergus
Estuaries SPA

Stack's to Mullaghareirk
Mountains, West Limerick
Hills and Mount Eagle SPA

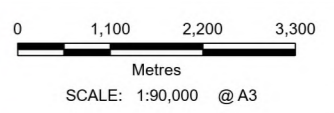


01	19/09/2025	2485475	TG	RPH	GW
Rev	Date	Description	Drn	Chk	App

Ballynisky Wind Farm

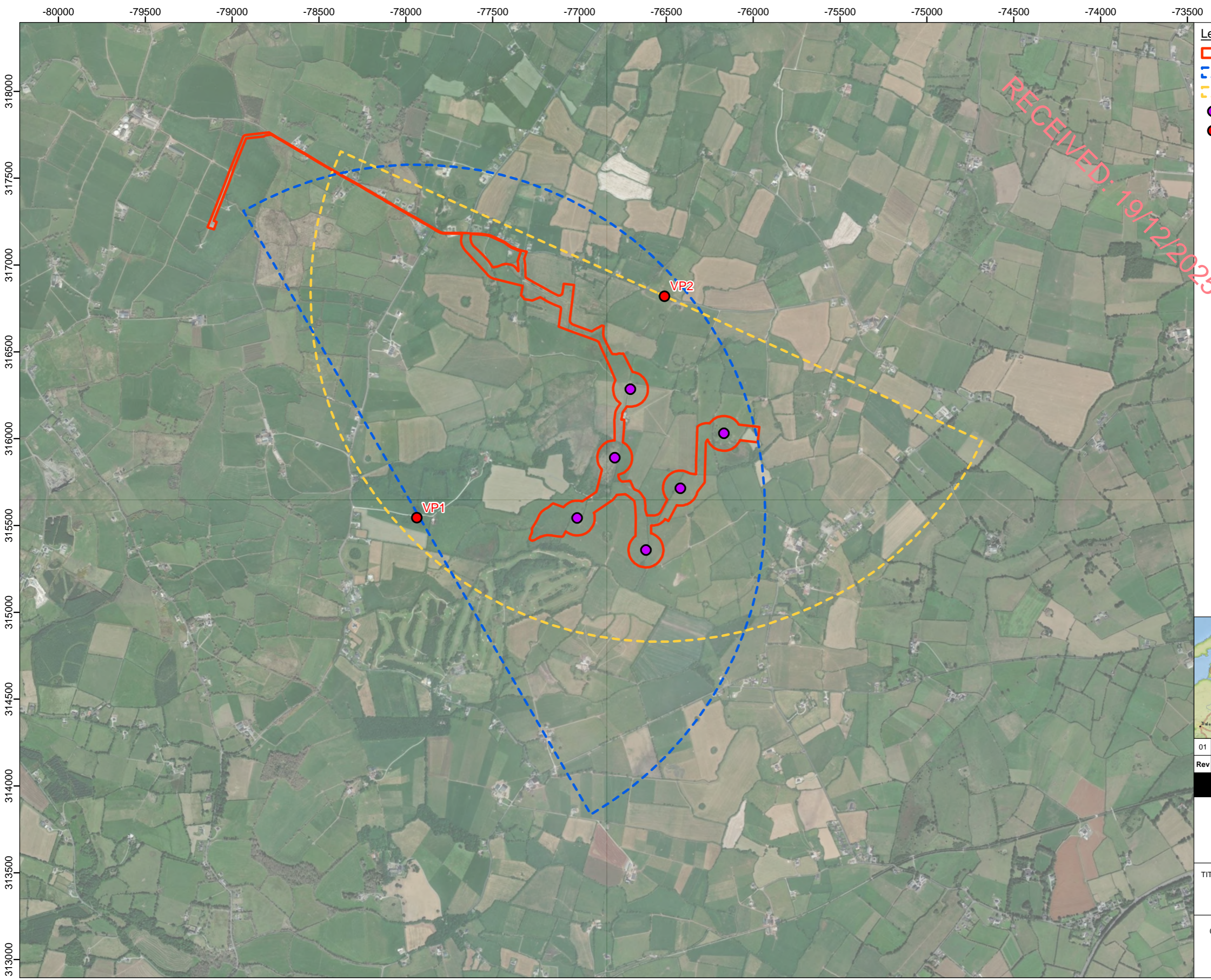


TITLE: Figure 2:
Relevant Designated Sites



REV 00

Contains Ordnance Survey data © Crown copyright and database right 2025
 NatGeo World Map: National Geographic, Esri, Garmin, HERE, UNEP-WCMC, USGS, NASA, ESA, METI, NRCAN, GEBCO, NOAA, increment P Corp.
 World Imagery: Earthstar Geographics
 Site Boundary:



- Legend:**
- Site Boundary
 - Viewshed 1
 - Viewshed 2
 - Wind Turbine Locations
 - Vantage Points

RECEIVED: 19/12/2025



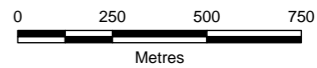
Rev	Date	Description	Drn	Chk	App
01	24/09/2025	2485475	TG	RPH	EP

Ballynisky Wind Farm




RSK
biocensus
EXPERTS IN ECOLOGY

TITLE: Figure 3:
Vantage Points and Viewsheds

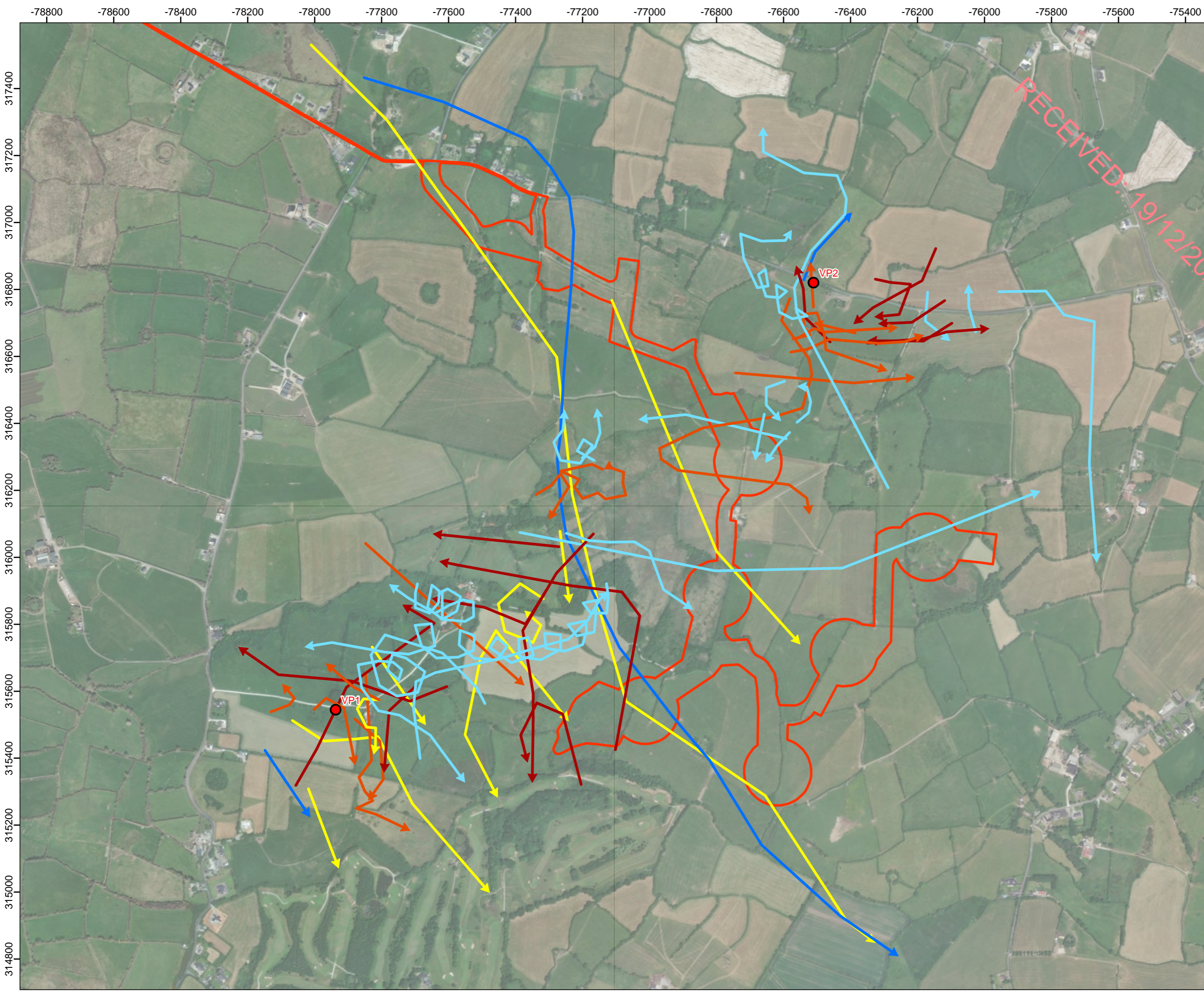


SCALE: 1:20,000 @ A3



REV 00

Contains Ordnance Survey data © Crown copyright and database right 2025
 GeoInfo World, Map: National Geographic, Esri, Garmin, HERE, UNEP-WCMC, USGS, NASA, ESA, METI, NRCAN, GEBCO, NOAA, increment P Corp.
 World Imagery: Maxar, Microsoft
 Site Boundary:
 Wind Turbine Locations:
 Vantage Points:
 Viewsheds:



- Legend:**
- Site Boundary
 - Vantage Points
 - Target Species Flightline**
 - ➔ Black Headed Gull
 - ➔ Buzzard
 - ➔ Common Gull
 - ➔ Kestrel
 - ➔ Lesser Black-backed Gull

RECEIVED: 19/12/2025



01	24/09/2025	2485475	TG	RPH	EP
Rev	Date	Description	Drn	Chk	App

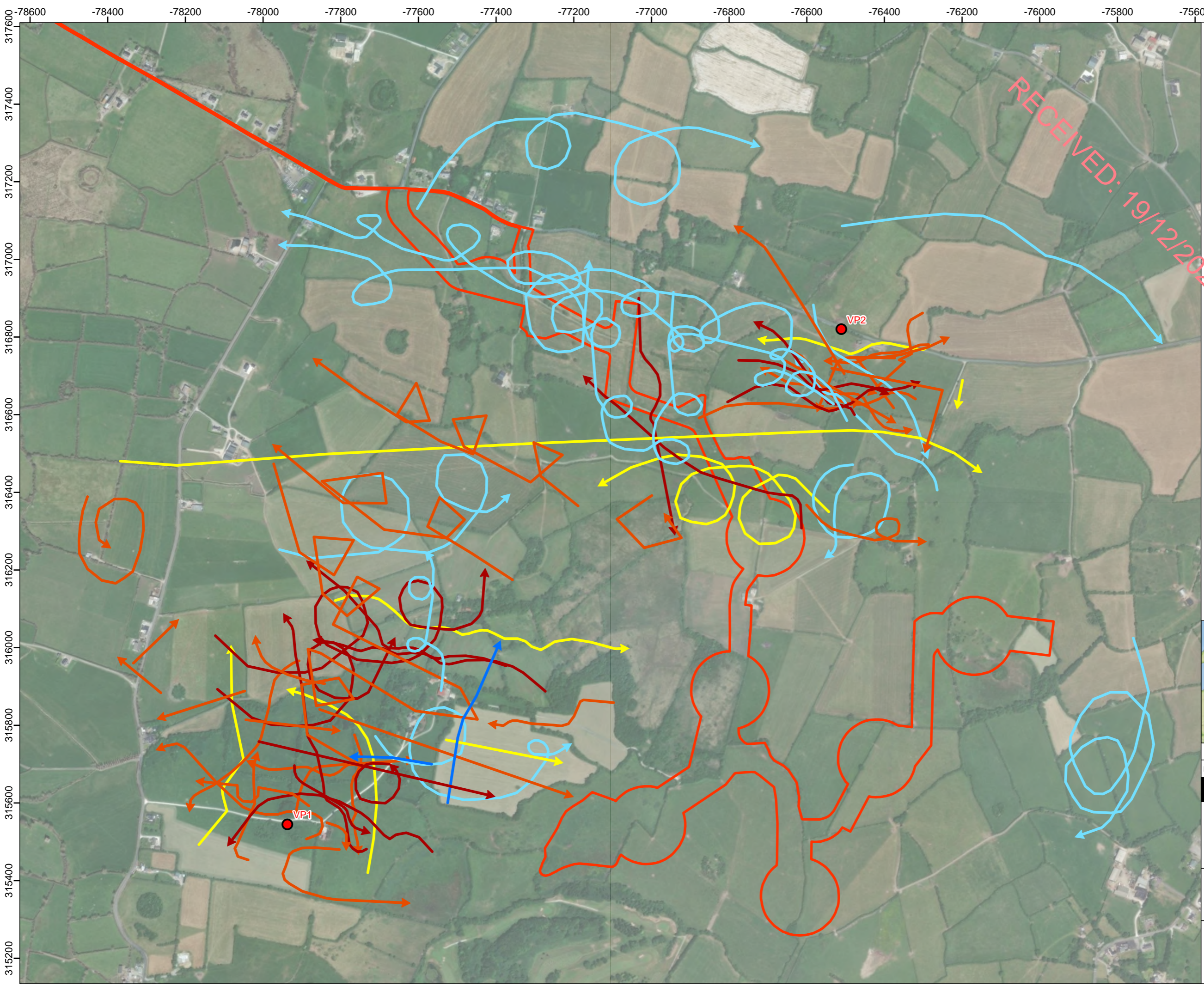
Ballynisky Wind Farm

TITLE: Figure 4a:
 Flight Observations from VP Surveys
 for Target Species in Year 1

Metres
SCALE: 1:10,500 @ A3

REV 00

Contains Ordnance Survey data © Crown copyright and database right 2025
 Bird Flightlines:
 NatGeo_World_Map: National Geographic, Esri, Garmin, HERE, UNEP-WCMC, USGS, NASA, ESA, METI, NRCAN, GEBCO, NOAA, increment P Corp.
 World Imagery: Maxar, Microsoft
 Site Boundary:
 Vantage Points:



- Legend:**
- Site Boundary
 - Vantage Points
 - Target Species Flightline**
 - ➔ Black Headed Gull
 - ➔ Buzzard
 - ➔ Common Gull
 - ➔ Kestrel
 - ➔ Lesser Black-backed Gull

RECEIVED: 19/12/2025



01	24/09/2025	2485475	TG	RPH	EP
Rev	Date	Description	Drn	Chk	App

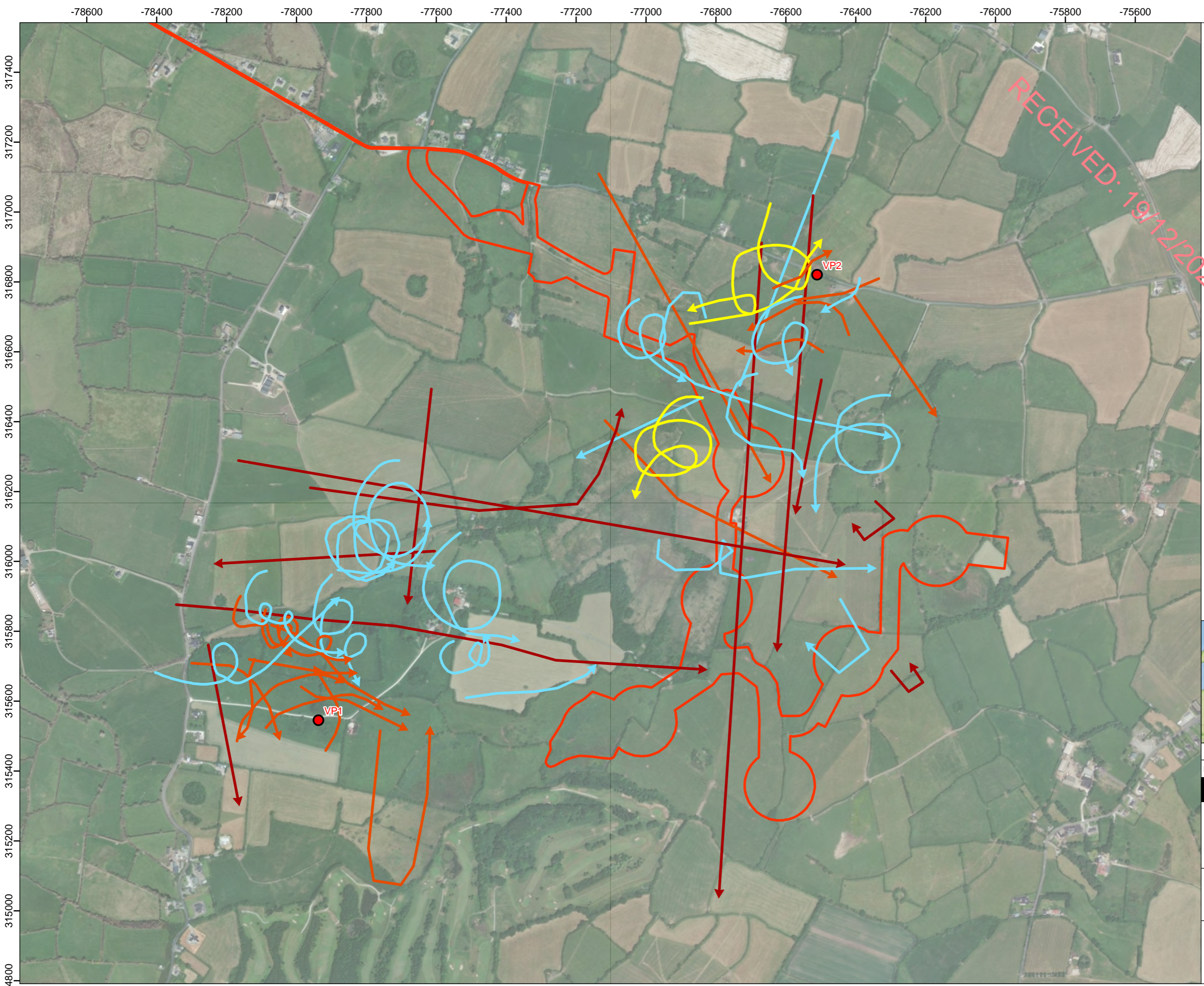
Ballynisky Wind Farm

TITLE: Figure 4b:
 Flight Observations from VP Surveys
 for Target Species in Year 2

Metres
SCALE: 1:9,000 @ A3

REV 00

Contains Ordnance Survey data © Crown copyright and database right 2025
 Bird Flightlines:
 NatGeo, World Map: National Geographic, Esri, Garmin, HERE, UNEP-WCMC, USGS, NASA, ESA, METI, NRCAN, GEBCO, NOAA, increment P Corp.
 World Imagery: Maxar, Microsoft
 Site Boundary:
 Vantage Points:



- Legend:**
- Site Boundary
 - Vantage Points
 - Target Species Flightline
 - ➔ Black Headed Gull
 - ➔ Buzzard
 - ➔ Kestrel
 - ➔ Lesser Black-backed Gull

RECEIVED: 19/12/2025



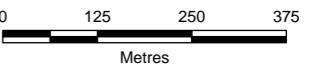
01	24/09/2025	2485475	TG	RPH	EP
Rev	Date	Description	Drn	Chk	App

Ballynisky Wind Farm




RSK
biocensus
EXPERTS IN ECOLOGY

TITLE: Figure 4c:
Flight Observations from VP Surveys
for Target Species in Year 3

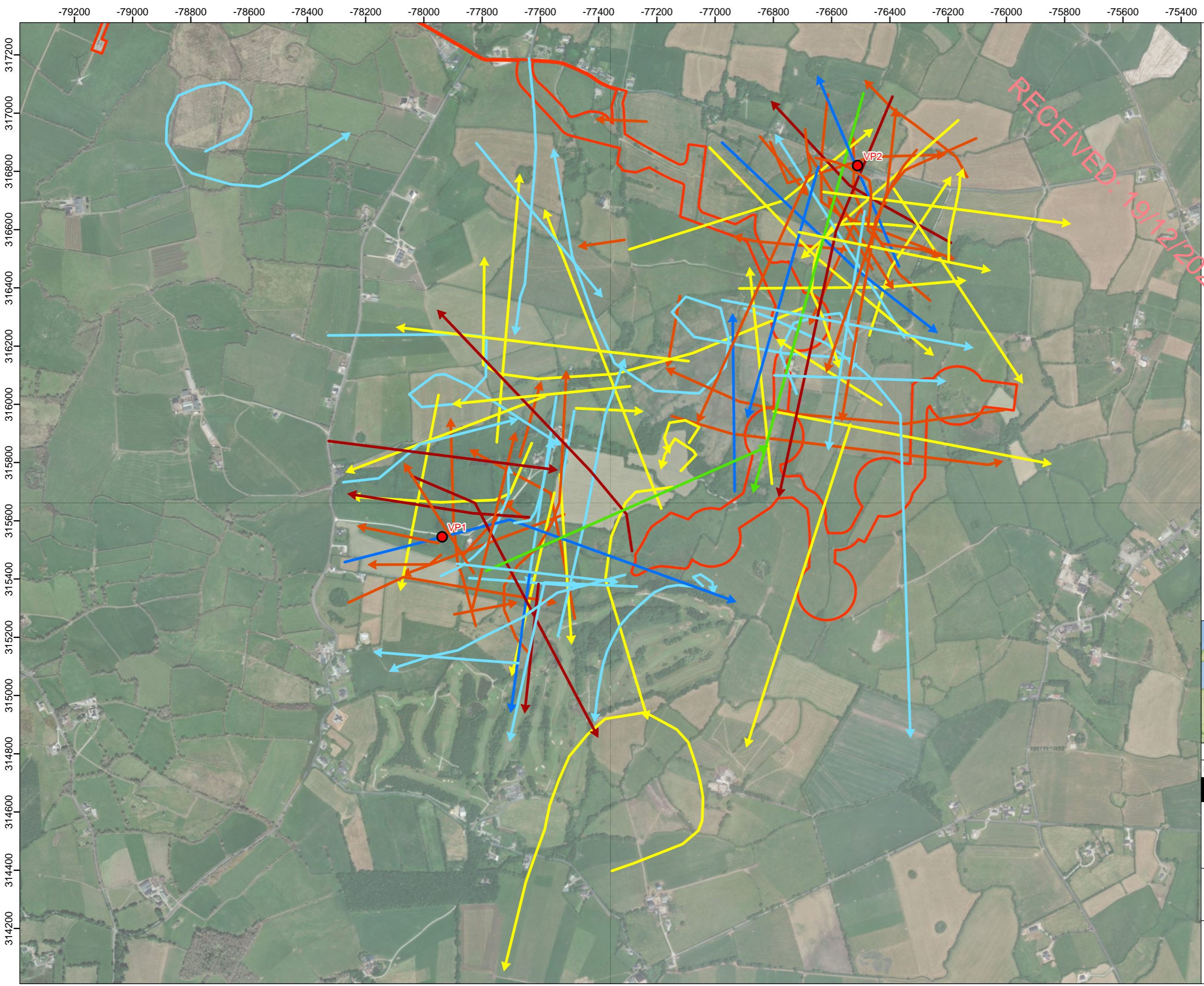


SCALE: 1:10,000 @ A3



REV 00

Contains Ordnance Survey data © Crown copyright and database right 2025
 Bird Flightlines:
 NatGeo_World_Map: National Geographic, Esri, Garmin, HERE, UNEP-WCMC, USGS, NASA, ESA, METI, NRCAN, GEBCO, NOAA, increment P Corp.
 World Imagery: Maxar, Microsoft
 Site Boundary:
 Vantage Points:



- Legend:**
- Site Boundary
 - Vantage Points
 - Target Species Flightline**
 - Black Headed Gull
 - Buzzard
 - Common Gull
 - Golden Plover
 - Kestrel
 - Lesser Black-backed Gull

RECEIVED: 19/12/2025



01	24/09/2025	2485475	TG	RPH	EP
Rev	Date	Description	Drn	Chk	App

Ballynisky Wind Farm




RSK
biocensus
EXPERTS IN ECOLOGY

TITLE: Figure 4d:
Flight Observations from VP Surveys
for Target Species in Year 4

0 150 300 450

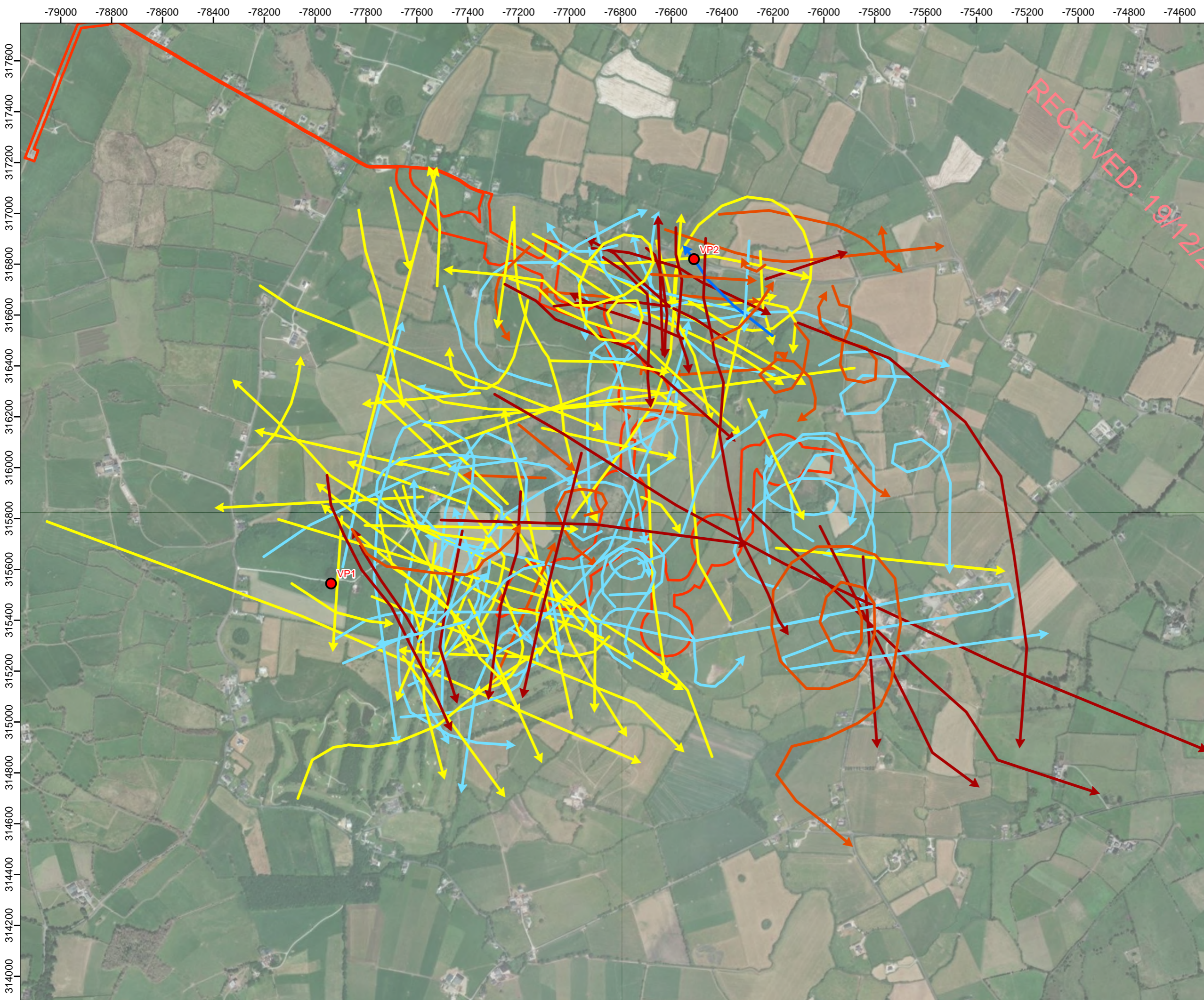
Metres

SCALE: 1:12,000 @ A3



REV 00

Contains Ordnance Survey data © Crown copyright and database right 2025
Bird Flightlines:
NatGeo, World, Map: National Geographic, Esri, Garmin, HERE, UNEP-WCMC, USGS, NASA, ESA, METI, NRCAN, GEBCO, NOAA, increment P Corp.
World Imagery: Maxar, Microsoft
Site Boundary:
Vantage Points:



- Legend:**
- Site Boundary
 - Vantage Points
 - Target Species Flightline**
 - ➔ Black Headed Gull
 - ➔ Buzzard
 - ➔ Common Gull
 - ➔ Kestrel
 - ➔ Lesser Black-backed Gull

RECEIVED: 19/12/2025



01	24/09/2025	2485475	TG	RPH	EP
Rev	Date	Description	Drn	Chk	App

Ballynisky Wind Farm



TITLE: Figure 4e:
Flight Observations from VP Surveys
for Target Species in Year 5

Metres
SCALE: 1:14,000 @ A3

REV 00

Contains Ordnance Survey data © Crown copyright and database right 2025
 Bird Flightlines:
 NatGeo_World_Map: National Geographic, Esri, Garmin, HERE, UNEP-WCMC, USGS, NASA, ESA, METI, NRCAN, GEBCO, NOAA, increment P Corp.
 World Imagery: Maxar, Microsoft
 Site Boundary:
 Vantage Points:



- Legend:**
- Site Boundary
 - Vantage Points
 - Target Species Flightline
 - ➔ Black Headed Gull

RECEIVED: 19/12/2025



01	19/09/2025	2485475	TG	RPH	EP
Rev	Date	Description	Drn	Chk	App

Ballynisky Wind Farm



TITLE: Figure 4f:
Migration Passages for Black-headed Gull in all Survey Years

SCALE: 1:9,000 @ A3

REV 00

Contains Ordnance Survey data © Crown copyright and database right 2025
 NatGeo_World_Map: National Geographic, Esri, Garmin, HERE, UNEP-WCMC, USGS, NASA, ESA, METI, NRCAN, GEBCO, NOAA, increment P Corp.
 World Imagery: Maxar, Microsoft
 Site Boundary:
 Vantage Points: